

## Ssangyong Rhino Double Cab—Long Wheel Base Standard Load-Lid™



**Fitting time:**

**60-90 minutes**

### Despatch list:

**50337-02-04**



**x1**

**50337-02-03**



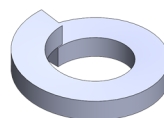
**x6**

**M8 Fender Washer**



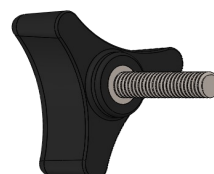
**x6**

**M8 Spring Washer**

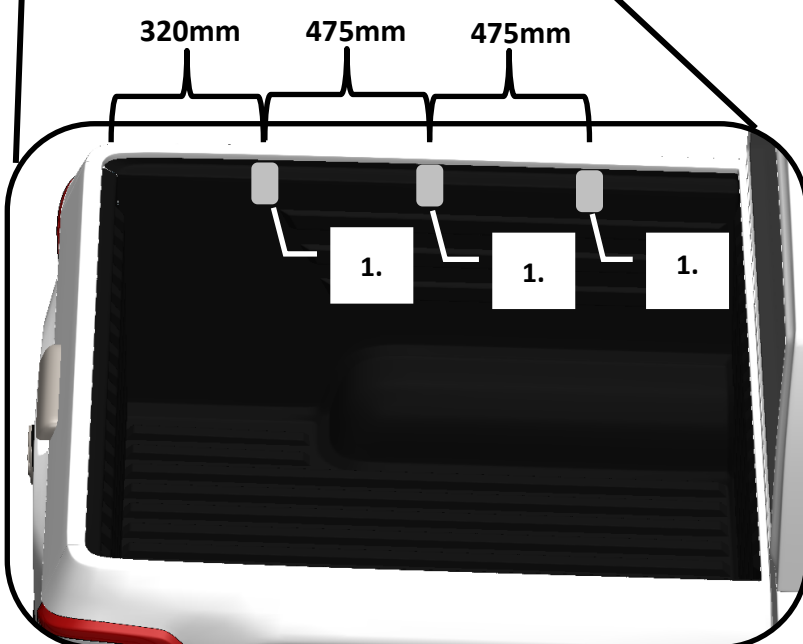


**x6**

**TK-M8x25**



**x6**



1. \_\_\_\_\_



x1

2. \_\_\_\_\_

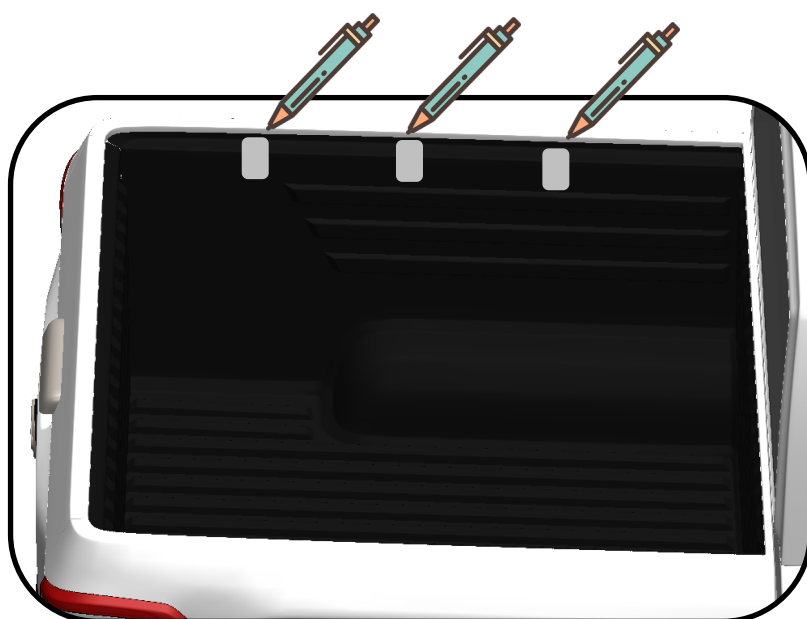


x1

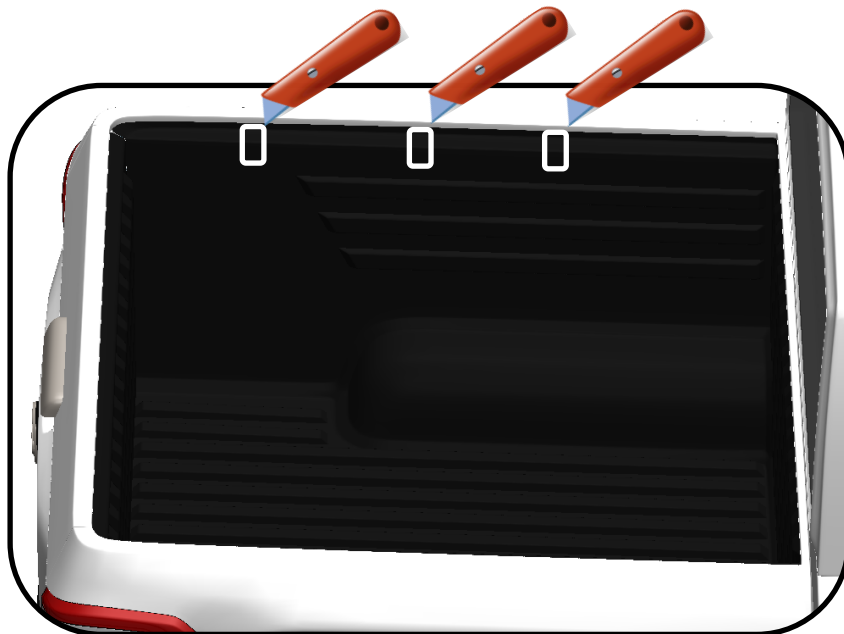
*Hold the provided template in position as dimensioned. Flush with the top of the liner.*

*Draw around the template and to mark the position for cutting.*

*Repeat this on the opposite side.*



2

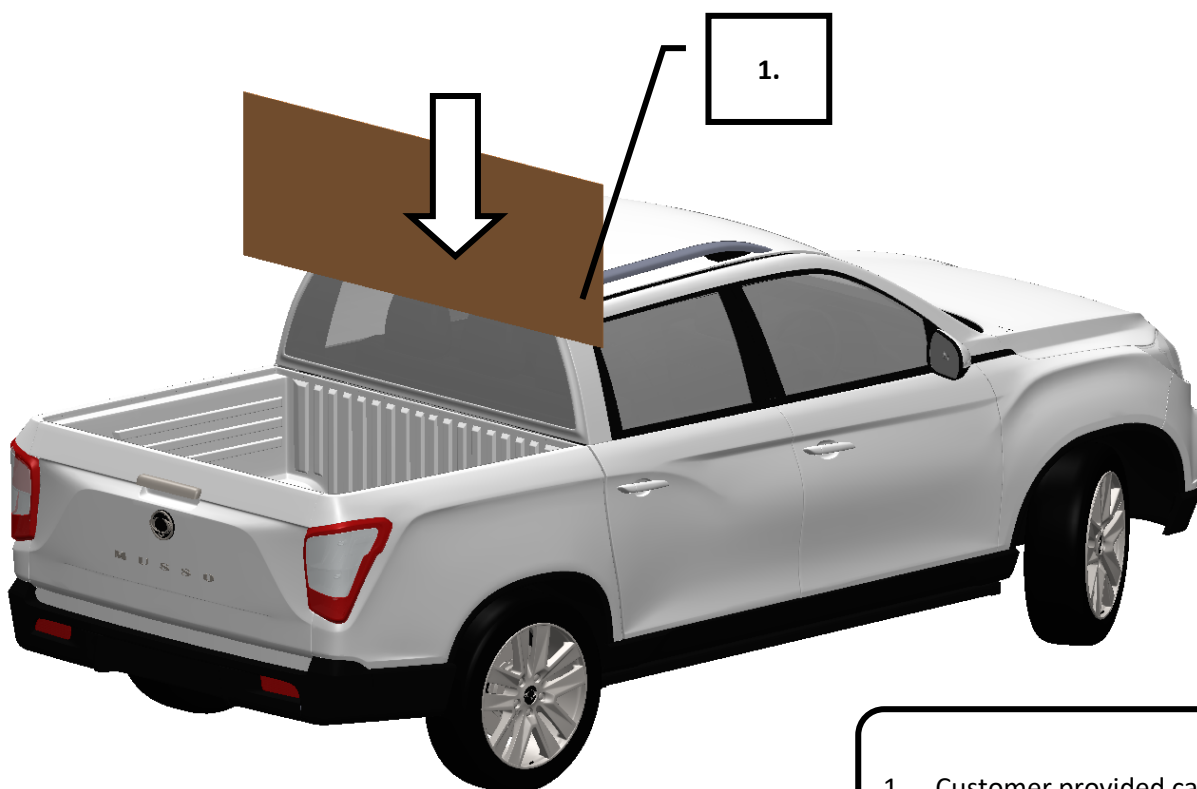


1. \_\_\_\_\_ x1

*Cut the liner around the marked lines and remove the rectangular segments.*

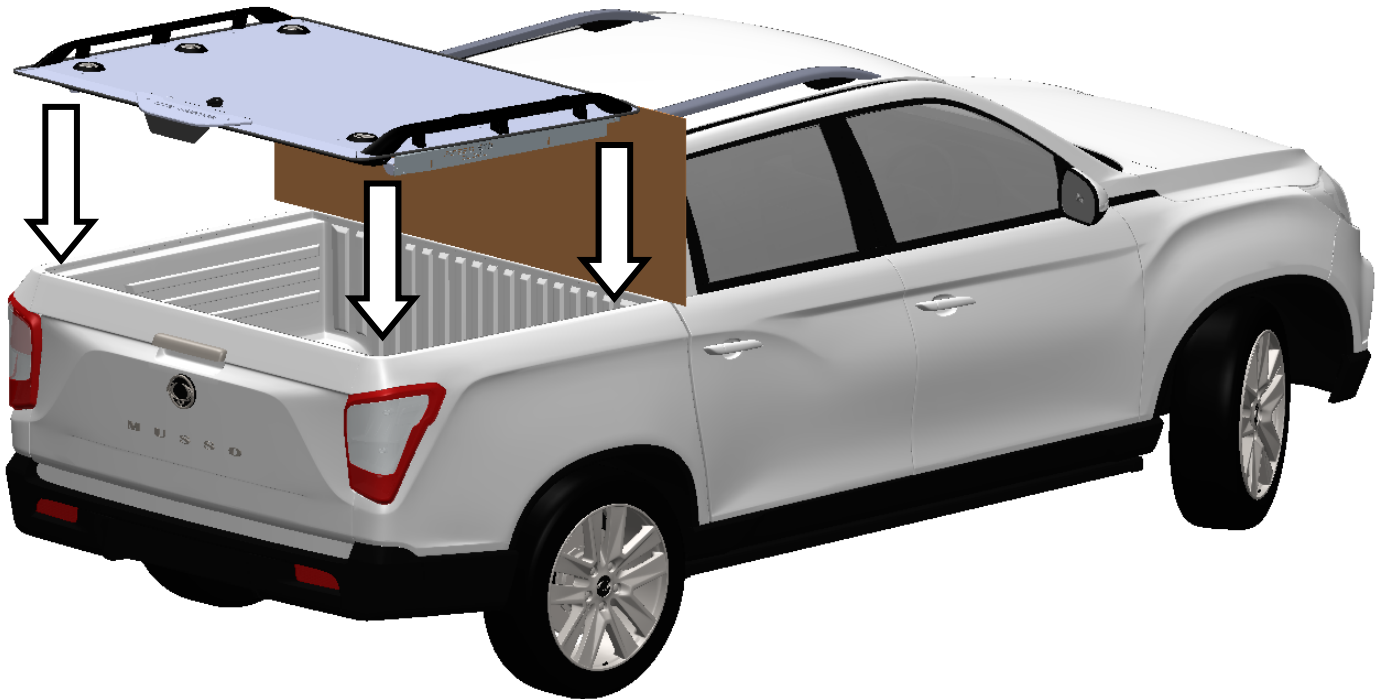
*Repeat this on the opposite side.*

3

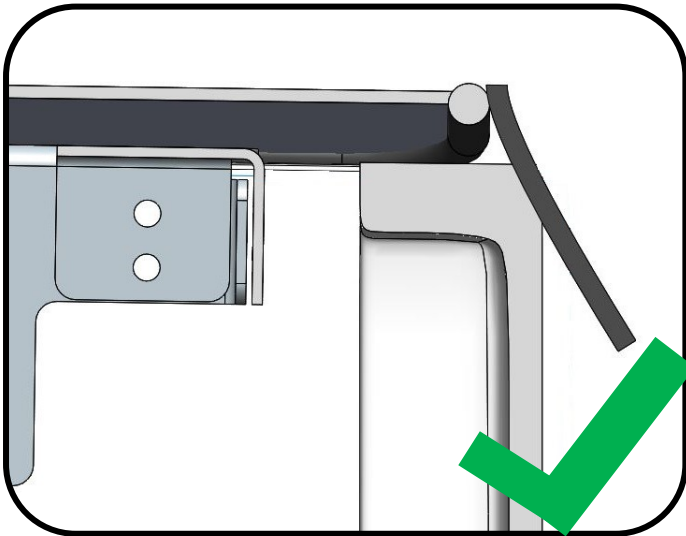


1. Customer provided cardboard.

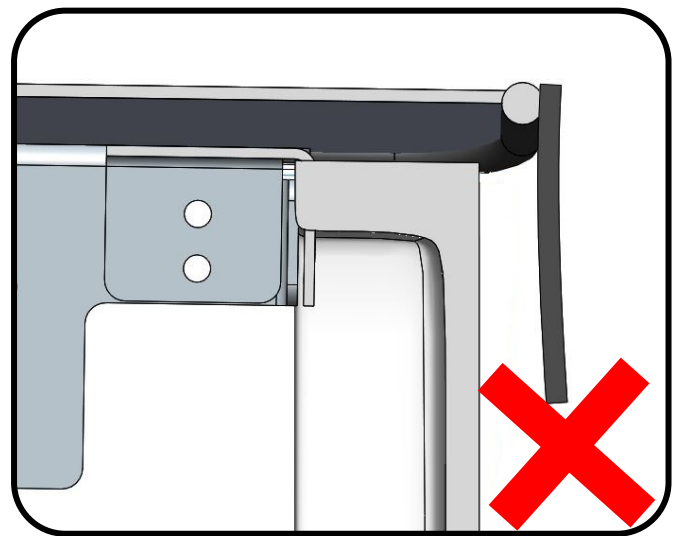
*Note: Place cardboard between cab and tray to protect the paint from scratching during installation.*



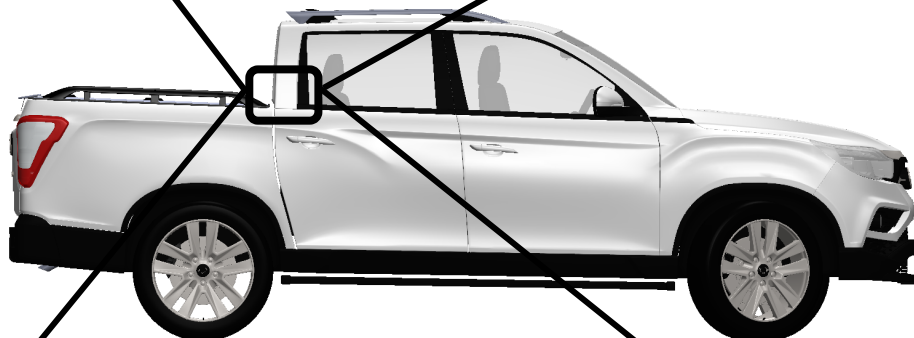
<https://wi.st/2OW7L7N>



Slight tension on the rubber flap.

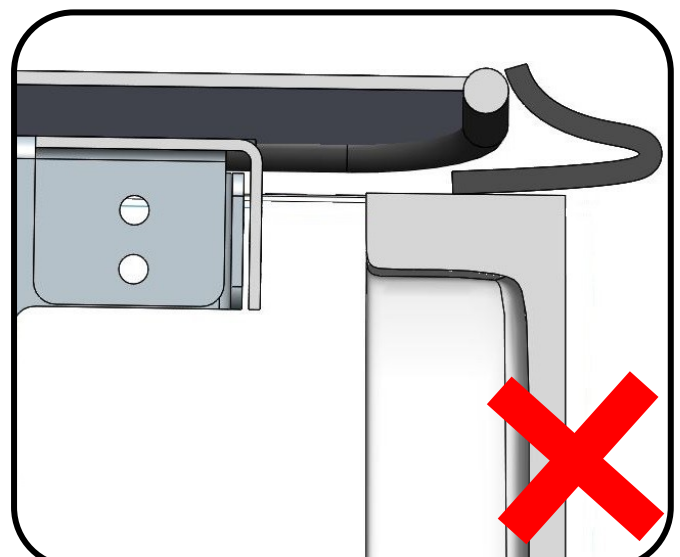
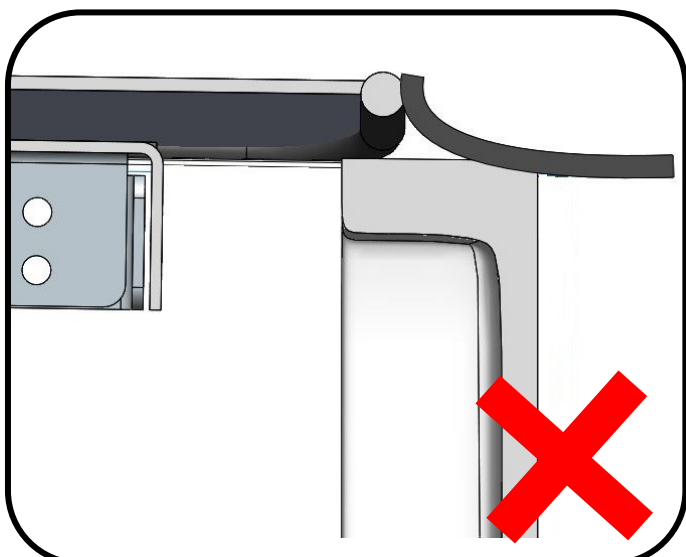


Load-Lid™ is pushed too far forward.



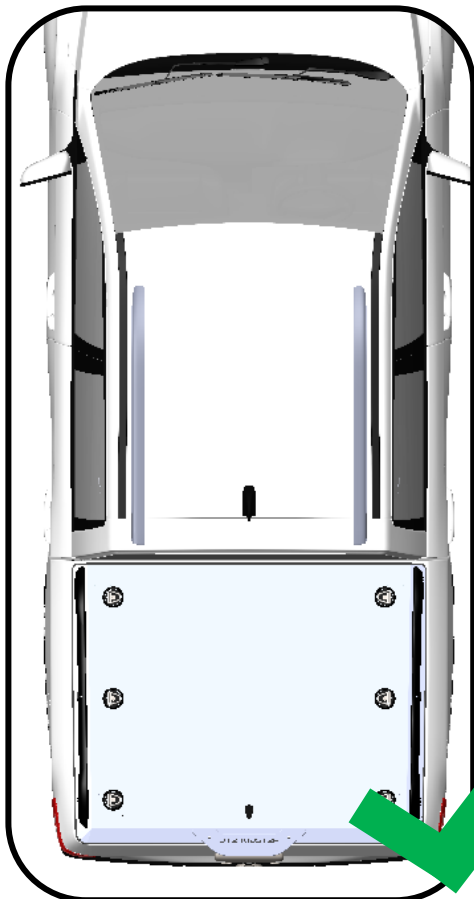
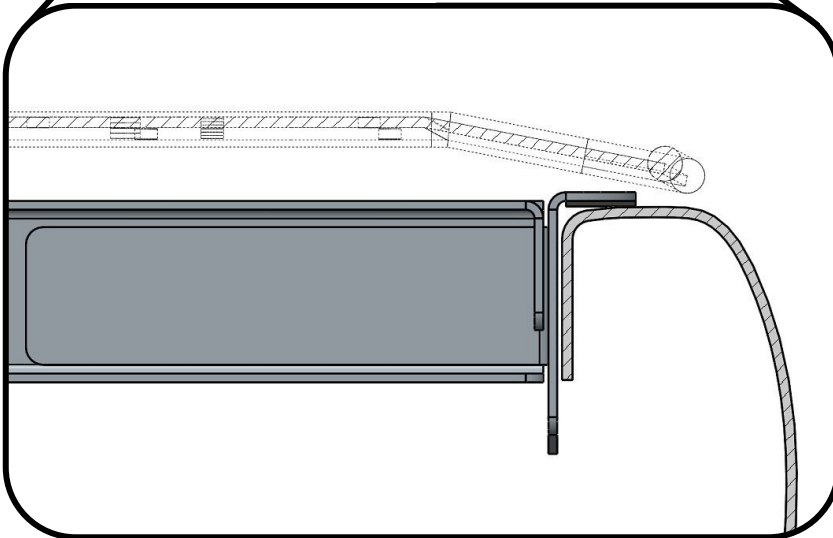
Load-Lid™ is pulled too far back.

Rubber flap is bunched underneath.

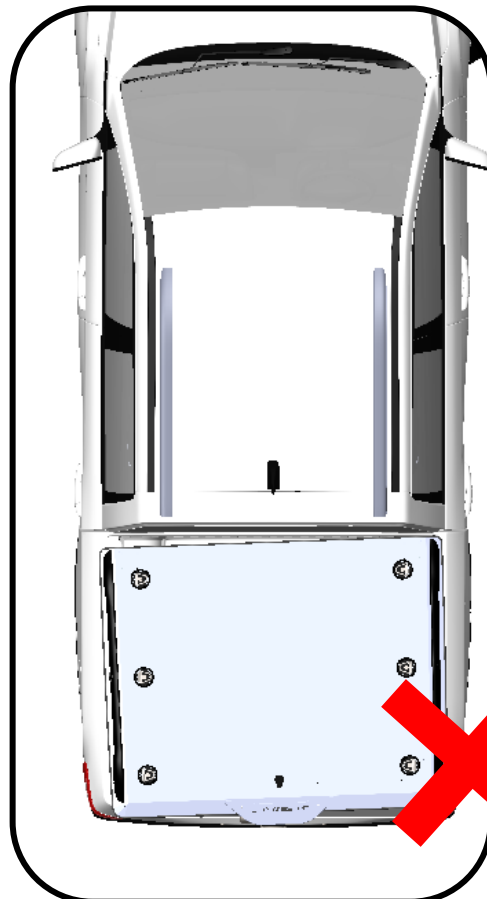


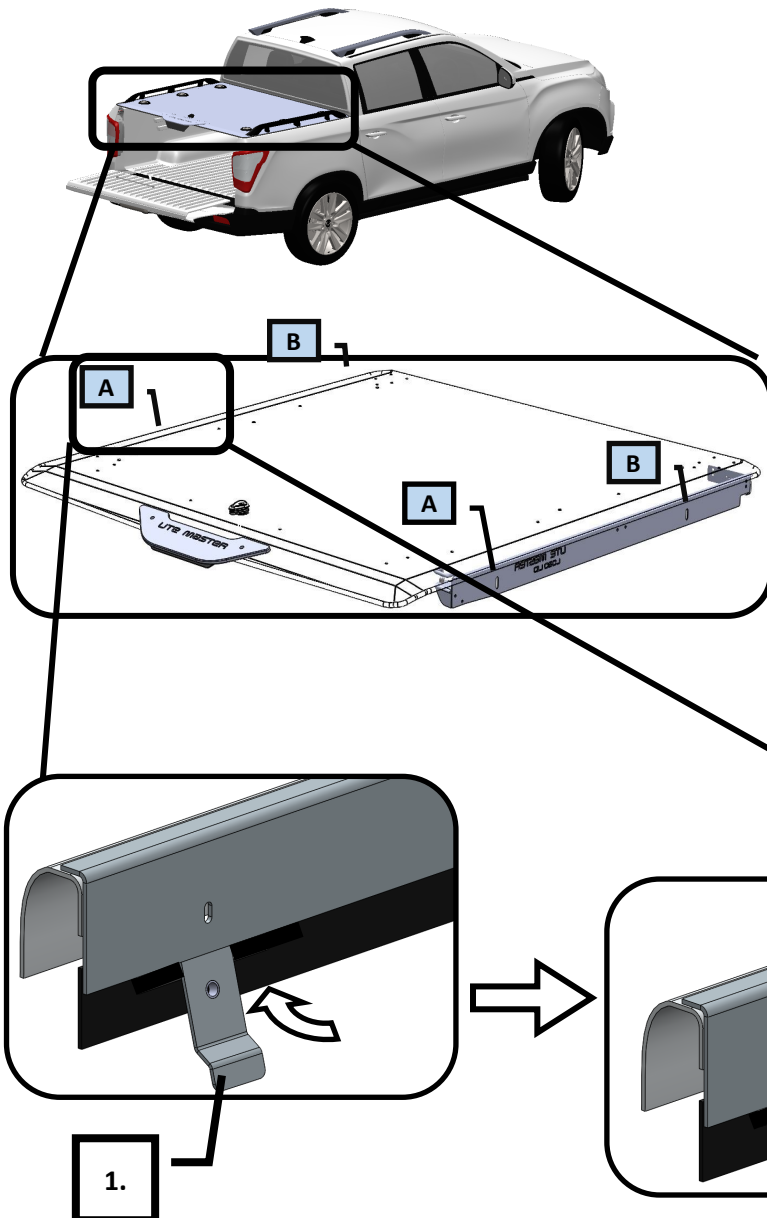


Make sure the Load-Lid is sitting firmly on **BOTH SIDES**.



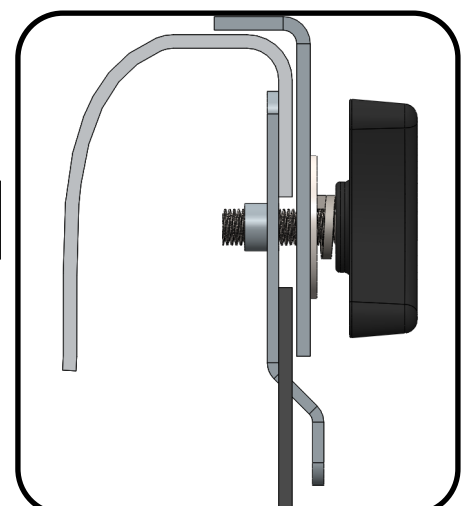
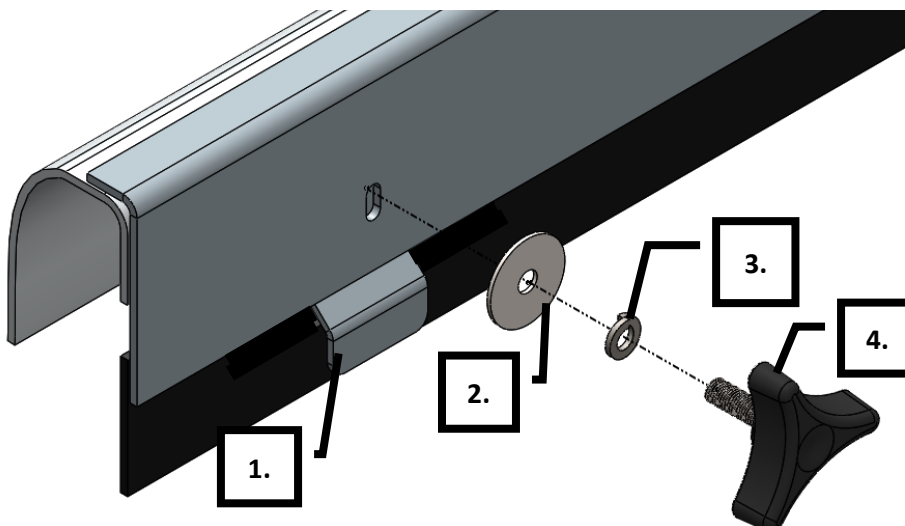
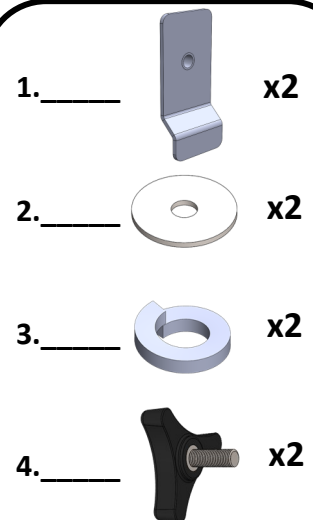
Ensure Load-Lid™ Is sitting square on the tray.





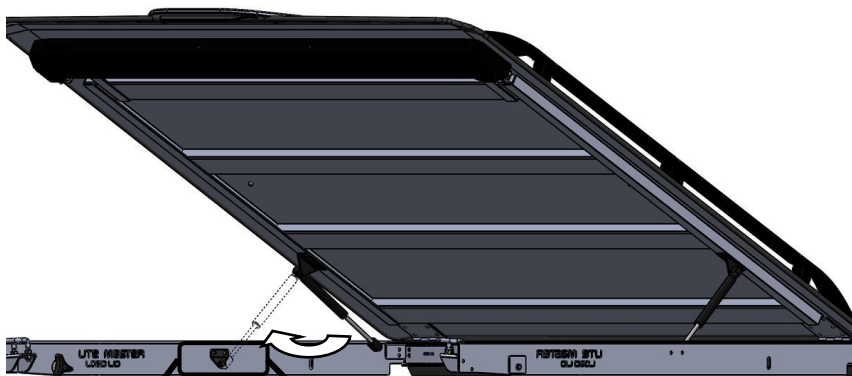
Only clamp through the rear two slots marked 'A' at this stage.

Use slots marked 'B' in step 9.





8



1. Cut the cable ties on **BOTH SIDES**.
2. Push both gas struts on to ball studs.

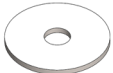
9

Clamp through the four remaining slots.

1. \_\_\_\_\_ x4



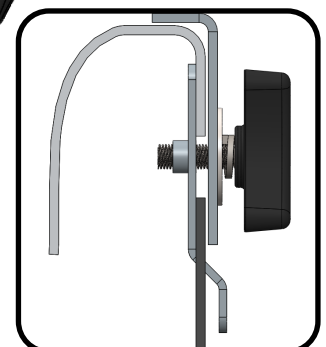
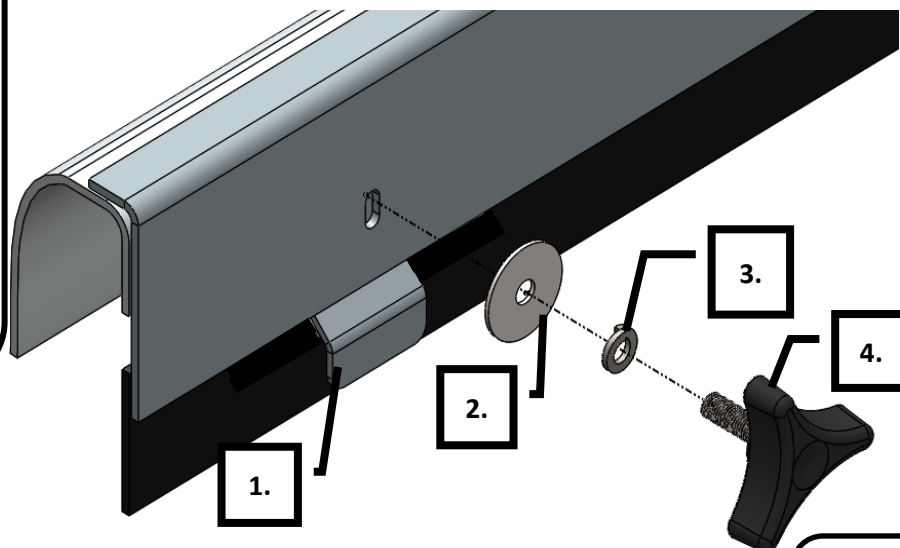
2. \_\_\_\_\_ x4



3. \_\_\_\_\_ x4



4. \_\_\_\_\_ x4

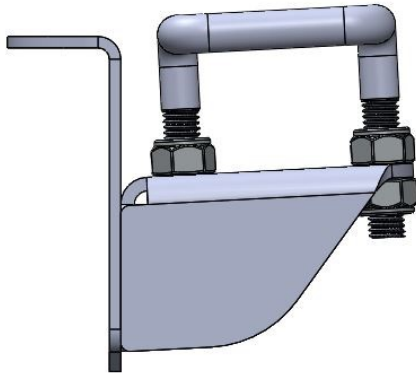






Slam Lock  
Adjustment  
Video.

<https://wi.st/2Bp7XJ9>



1. Adjust the nuts shown on the lock strike to affect the final closing height of the Load-Lid™
2. Refer to the video shown on the QR code above for details.

## IMPORTANT NOTE:

When removing and refitting:

- Disconnect the gas stays and lock the lid into the mounting frame before undoing the clamps and removing the lid (this prevents damaging the tray).
- When refitting the lid, make sure that the rubber flap at the front of the lid is pressing firmly against the front of the tray (*refer to page 5*).
- If your lid has a rattle when driving, loosen the clamps and move the lid back slightly to ensure the rubber flap is pressing firmly on the front (*refer to page 5*) and re-tighten the clamps.

**NZ Support:****P:** 0800 683 352**E:** [sales@utemaster.co.nz](mailto:sales@utemaster.co.nz)**W:** [www.utemaster.co.nz](http://www.utemaster.co.nz)**Australia Support:****P:** 1800 43 345**E:** [sales@utemaster.com.au](mailto:sales@utemaster.com.au)**W:** [www.utemaster.com.au](http://www.utemaster.com.au)

Your Load-Lid™ is now fully fitted and ready to use. We recommend frequently tightening the clamps and greasing the lock to enjoy the full benefits of your Load-lid.

Thank you again for using Utemaster and don't forget to keep checking our website for our latest innovations!