

Ssangyong Rhino Double Cab Standard Load-Lid™



Fitting time:

60-90 minutes

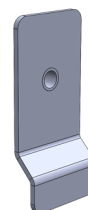
Despatch list:

50337-02-04



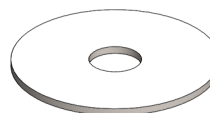
x1

50337-02-03



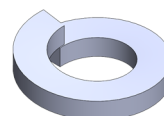
x4

M8 Fender Washer



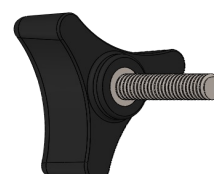
x4

M8 Spring Washer



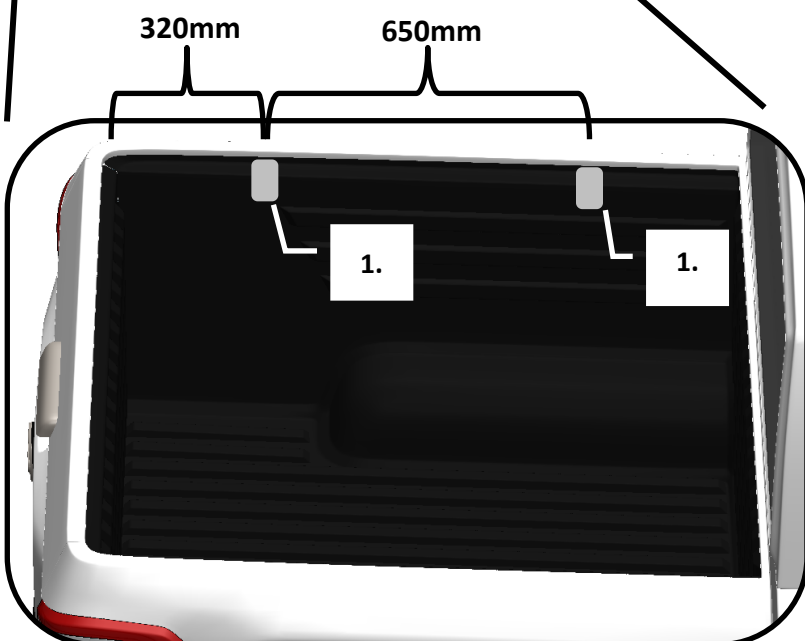
x4

TK-M8x25



x4

1



1. _____



x1

2. _____

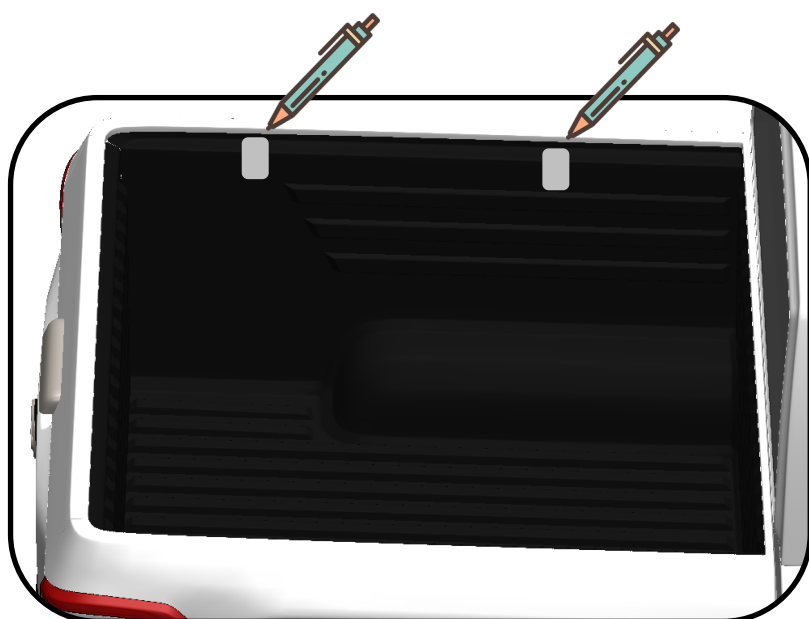


x1

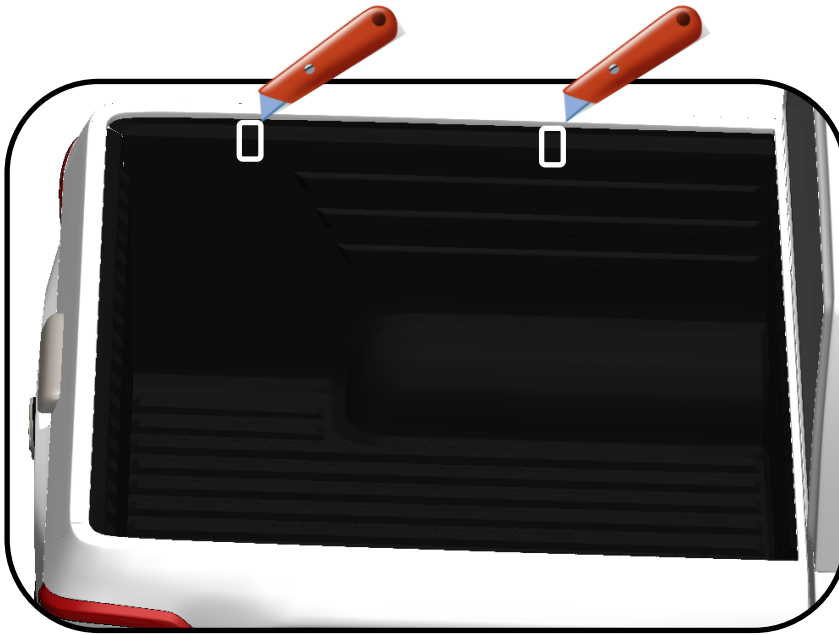
Hold the provided template in position as dimensioned. Flush with the top of the liner.

Draw around the template and to mark the position for cutting.

Repeat this on the opposite side.



2

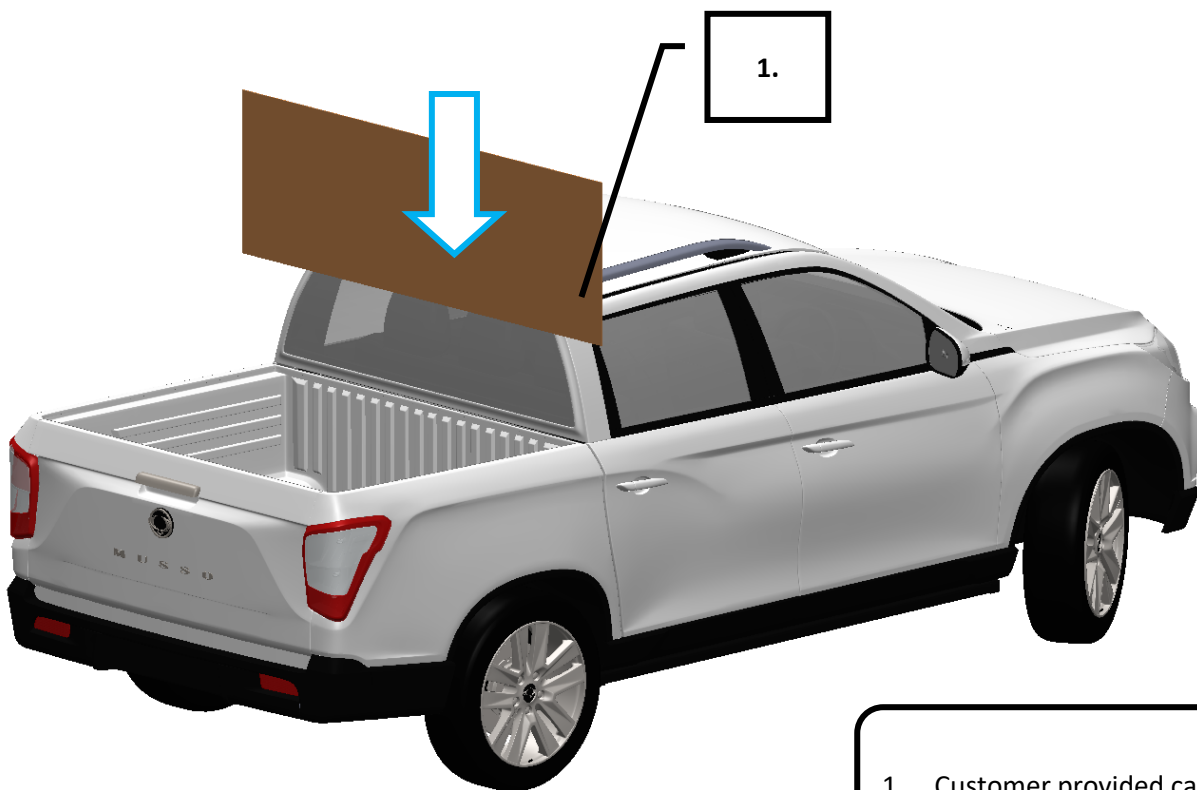


1. _____ x1

Cut the liner around the marked lines and remove the rectangular segment.

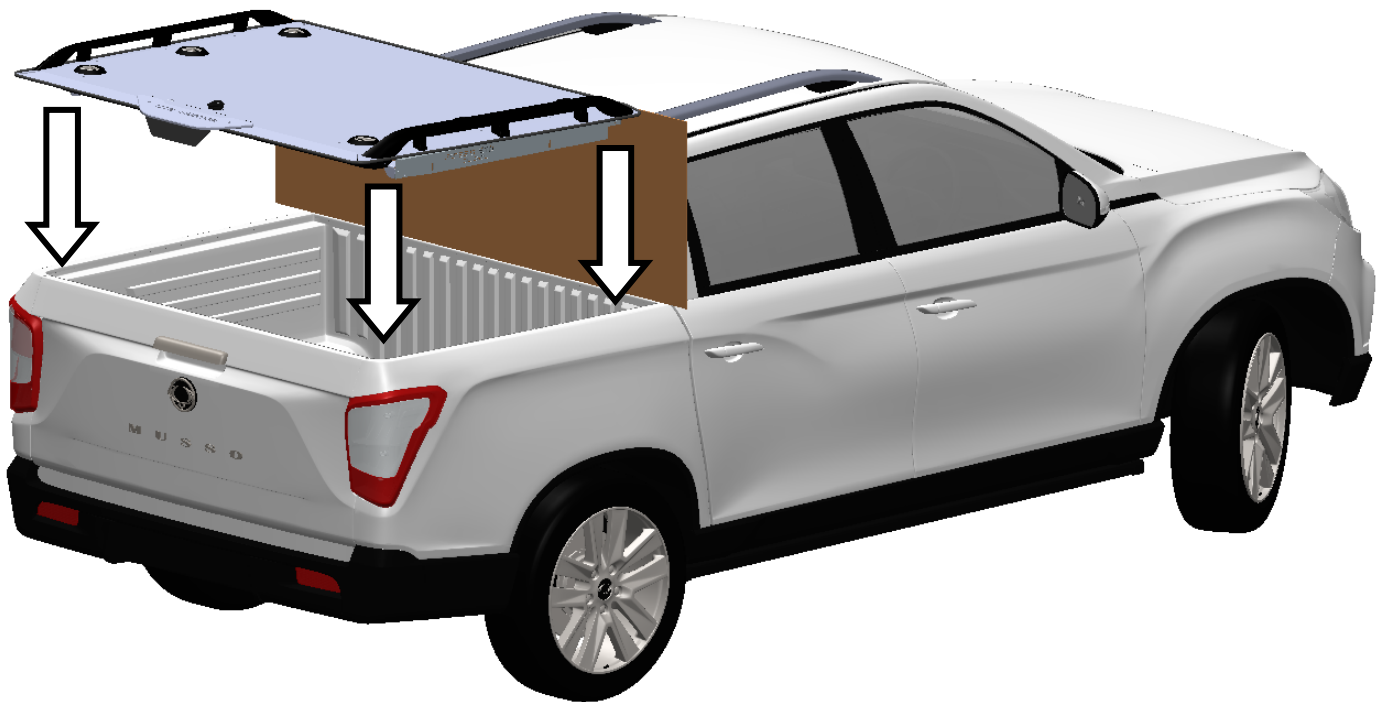
Repeat this on the opposite side.

3

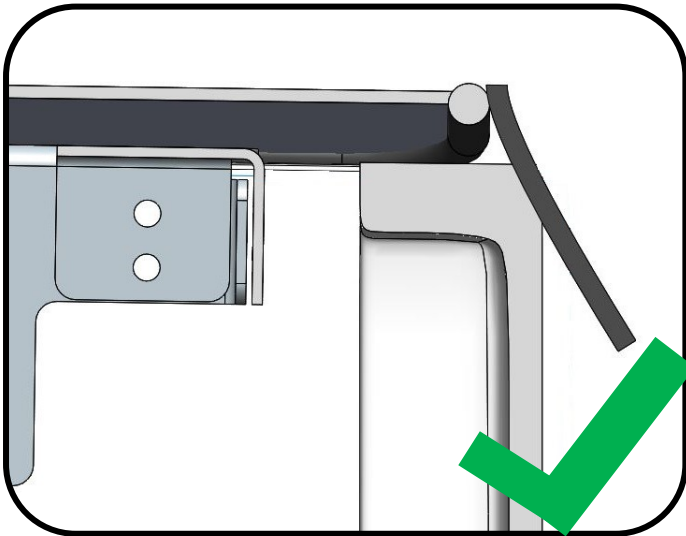


1. Customer provided cardboard.

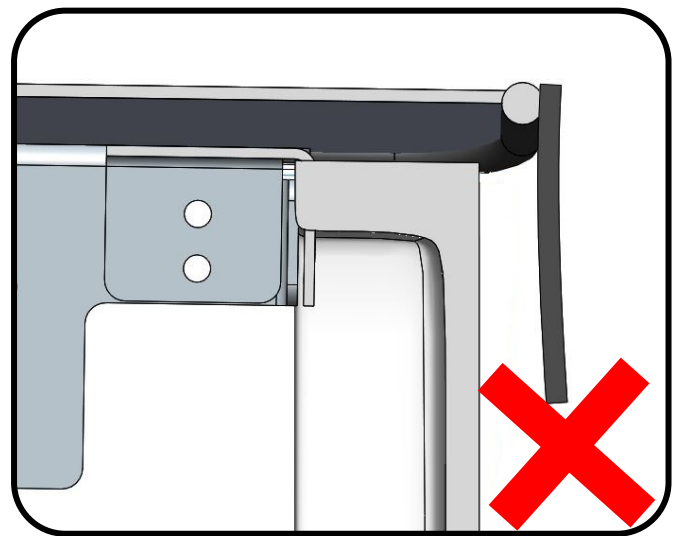
Note: Place cardboard between cab and tray to protect the paint from scratching during installation.



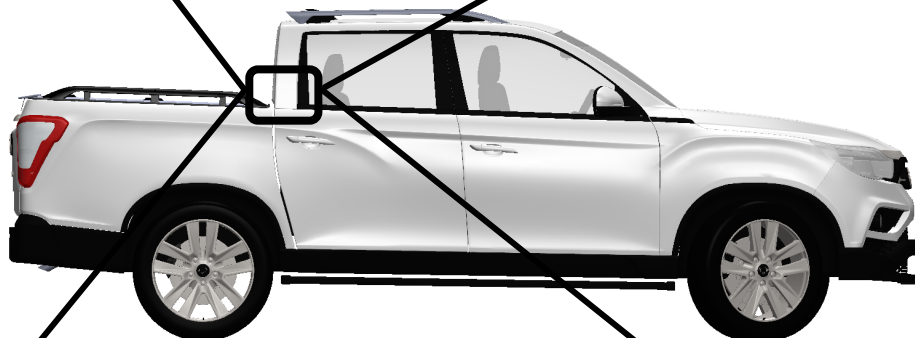
<https://wi.st/2OW7L7N>



Slight tension on the rubber flap.

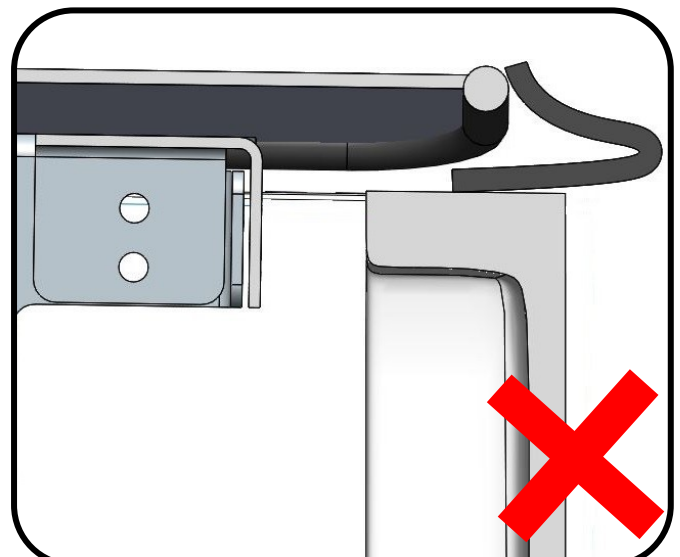
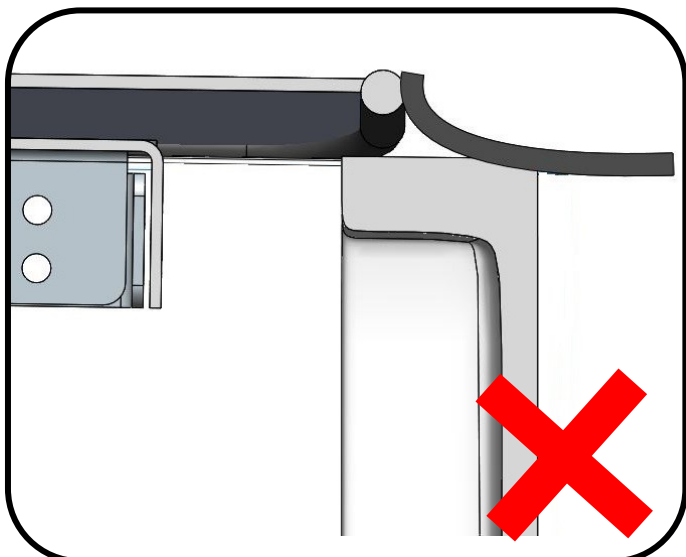


Load-Lid™ is pushed too far forward.



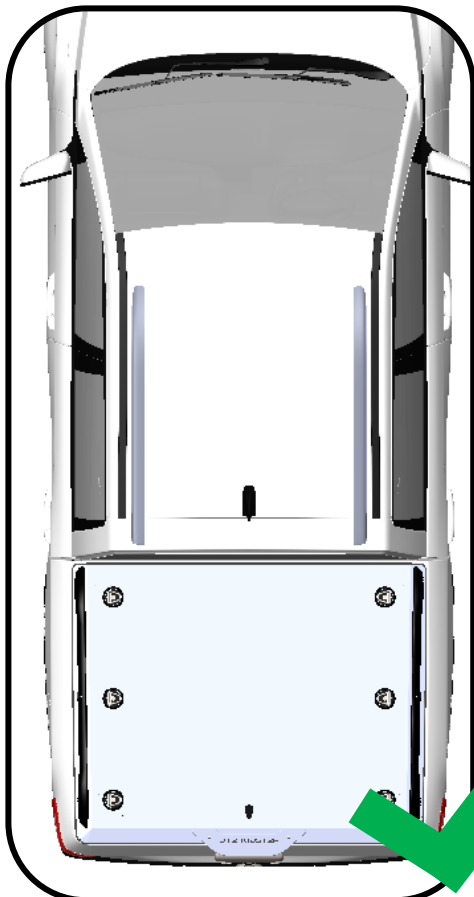
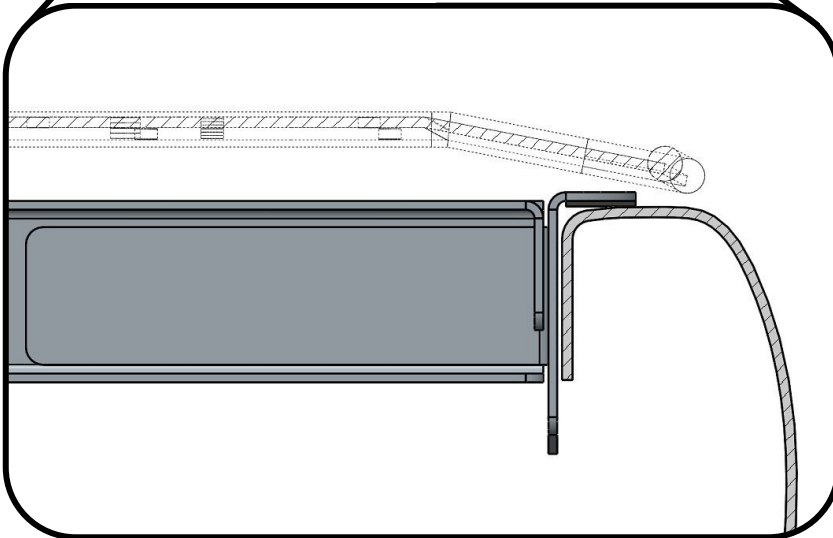
Load-Lid™ is pulled too far back.

Rubber flap is bunched underneath.

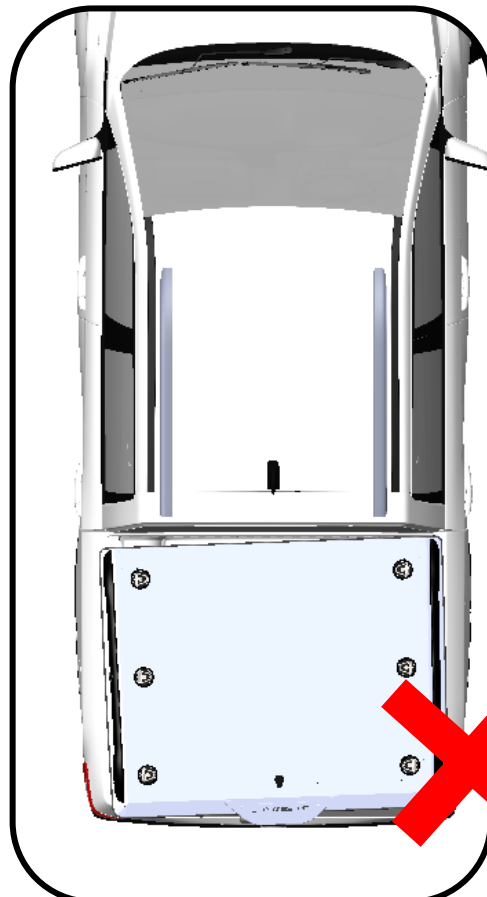


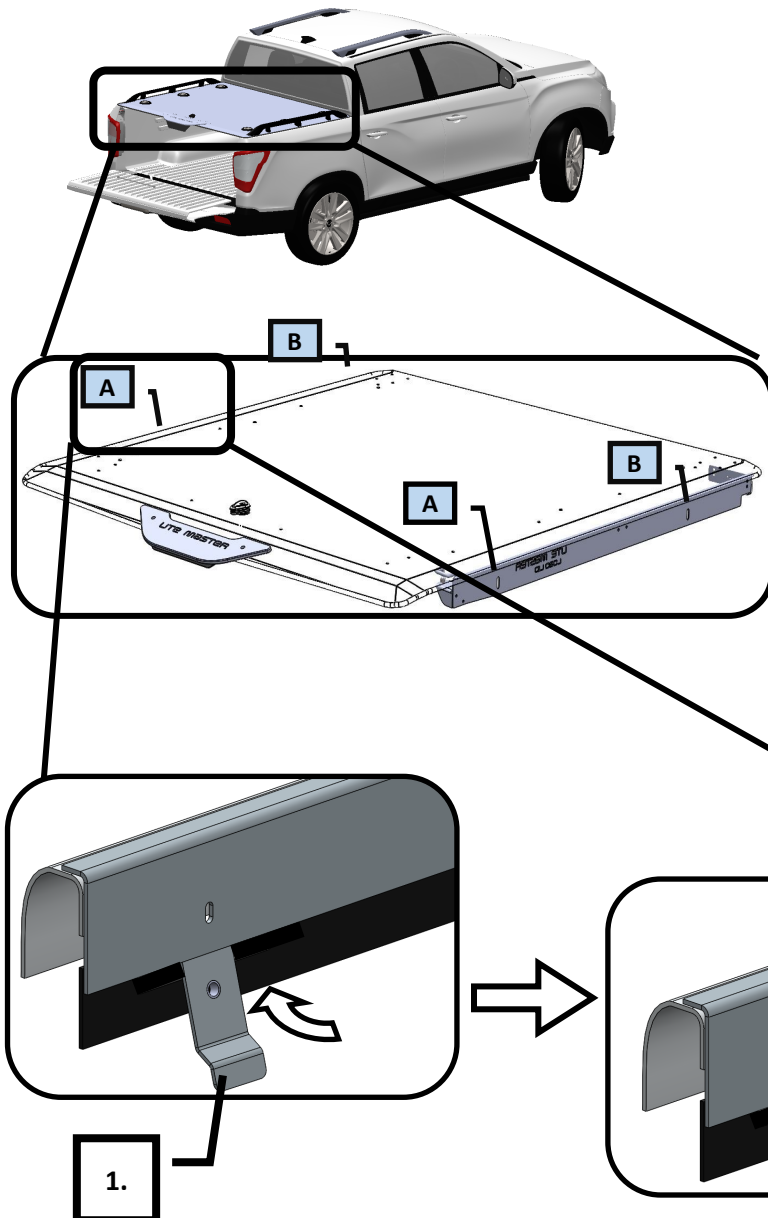


Make sure the Load-Lid is sitting firmly on **BOTH SIDES**.



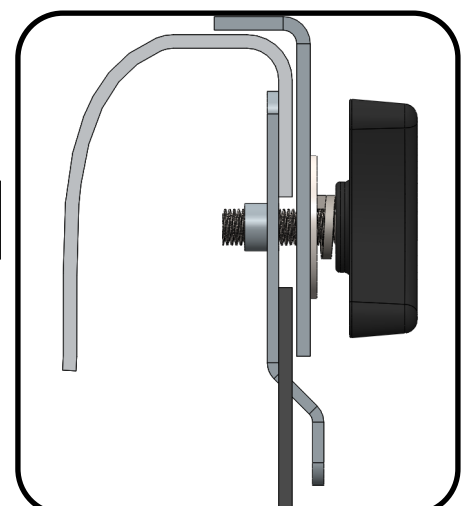
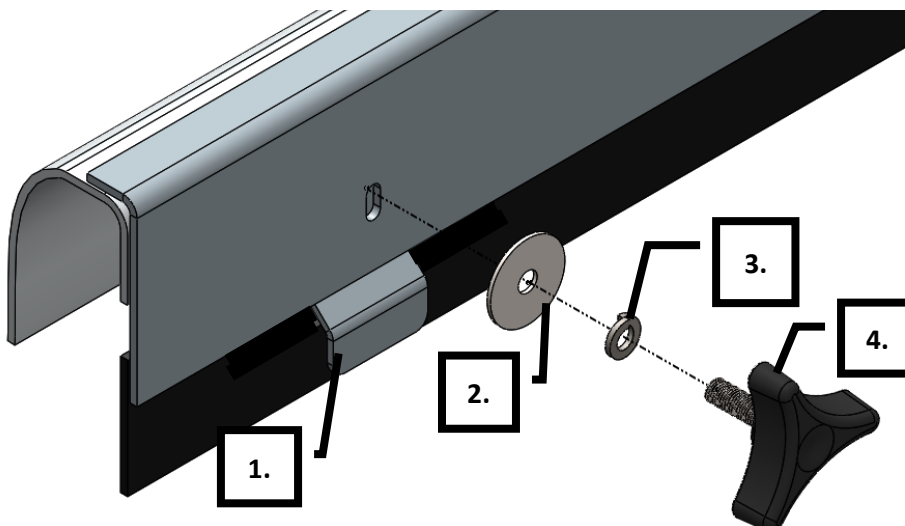
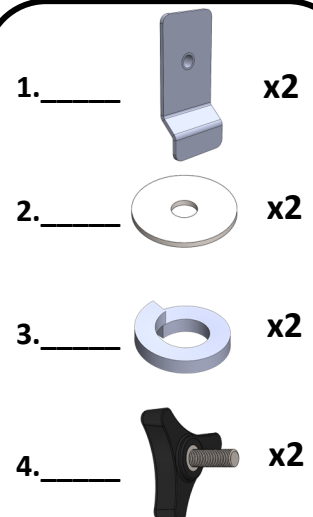
Ensure Load-Lid™ Is sitting square on the tray.



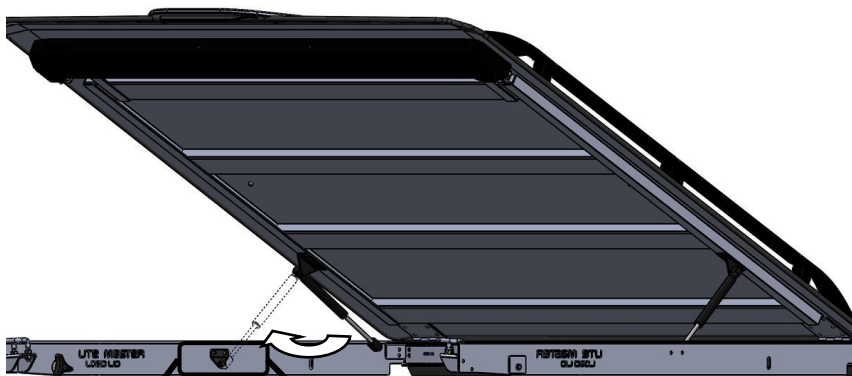


Only clamp through the rear two slots marked 'A' at this stage.

Use slots marked 'B' in step 9.



8



1. Cut the cable ties on **BOTH SIDES**.
2. Push both gas struts on to ball studs.

9

Clamp through the two remaining slots.

1. _____ x2



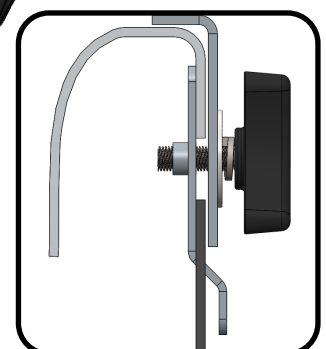
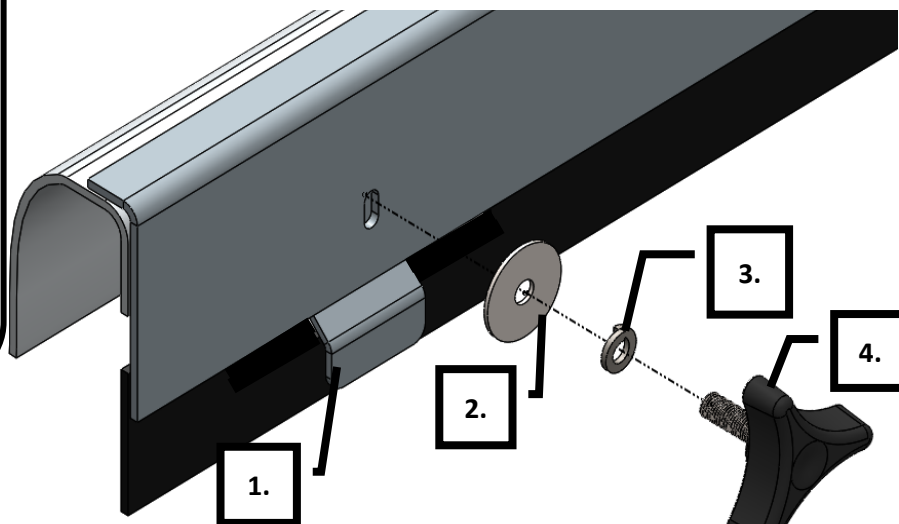
2. _____ x2



3. _____ x2



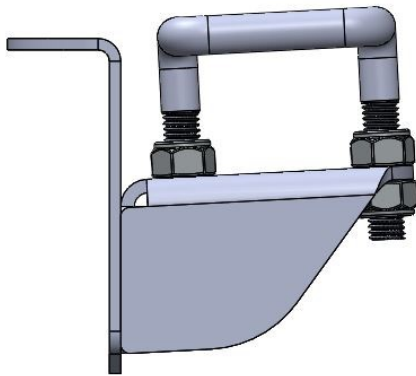
4. _____ x2





Slam Lock
Adjustment
Video.

<https://wi.st/2Bp7XJ9>



1. Adjust the nuts shown on the lock strike to affect the final closing height of the Load-Lid™
2. Refer to the video shown on the QR code above for details.

IMPORTANT NOTE:

When removing and refitting:

- Disconnect the gas stays and lock the lid into the mounting frame before undoing the clamps and removing the lid (this prevents damaging the tray).
- When refitting the lid, make sure that the rubber flap at the front of the lid is pressing firmly against the front of the tray (*refer to page 5*).
- If your lid has a rattle when driving, loosen the clamps and move the lid back slightly to ensure the rubber flap is pressing firmly on the front (*refer to page 5*) and re-tighten the clamps.

NZ Support:**P:** 0800 683 352**E:** sales@utemaster.co.nz**W:** www.utemaster.co.nz**Australia Support:****P:** 1800 43 345**E:** sales@utemaster.com.au**W:** www.utemaster.com.au

Your Load-Lid™ is now fully fitted and ready to use. We recommend frequently tightening the clamps and greasing the lock to enjoy the full benefits of your Load-lid.

Thank you again for using Utemaster and don't forget to keep checking our website for our latest innovations!