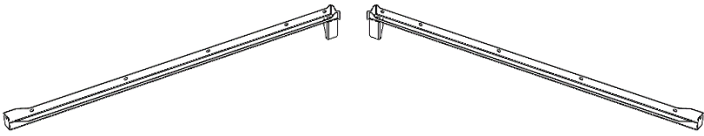
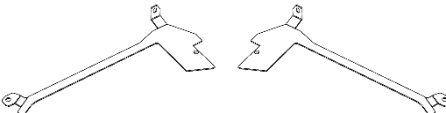
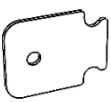
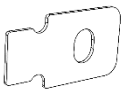
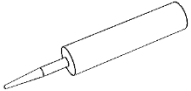

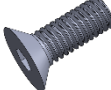

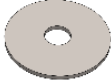




Ram 1500 DT RamBox – Despatch List

PRT-004455L PRT-004455R  <i>(with drainage plug pre-installed)</i>	1x 1x
PRT-004913L PRT-004913R  <i>(with bulb seal pre-installed)</i>	1x 1x
PRT-003744 	2x
PRT-004935 	2x
Tube of black sealer <i>(new, with nozzle)</i> 	1x
X135HT Bulb seal 	1.5m
M6 x 16mm CSK bolt 	2x
M8 x 16mm (black) 	2x
M8 fender washer 	2x
M8 nyloc nut 	2x
LD002 Pipe 700mm length 	1x

Ram 1500 DT RamBox Load-Lid Fitting Instructions

Thank you for purchasing a quality Utemaster™ product, our aim is providing you with as much assistance as possible throughout the fitting process. Please contact us if assistance is needed.



WATCH THE FITTING VIDEO BEFORE ATTEMPTING TO INSTALL

Enter this address into your web browser to view the fitting video:

<https://bit.ly/3xvxllv>



Fitting time:

120-150 minutes



Step 1) Remove tonneau cover from the vehicle (if it has one installed).

Step 2) Remove the hose in the front corner (if required), then unbolt and remove the track from along each side. Clean the surface behind each track.



Step 3) Seal the front corner joins.



Step 4) Place the bulb seal on each side of the front wall top face, ensure the side of the bulb is sitting in the glue. Trim to length.

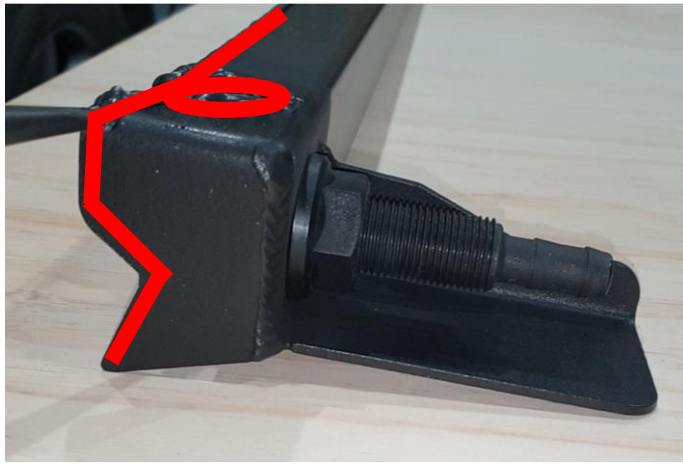


Do Steps 5-9 on one side of the vehicle before starting on the other side so sealer doesn't harden before being applied

Step 5) Seal the rear corner joins shown below in red.



Step 6) Run sealer along the outside edge of the drainage channels (PRT-004455L & PRT-004455R). Completely circle each hole. Ensure it has a good bead of glue along the entire length so it seals nicely against the vehicle.



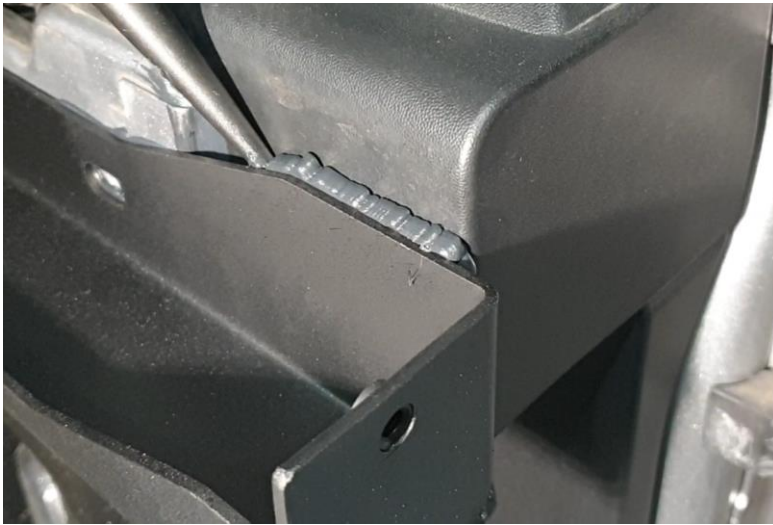
Step 7) Install the drainage channel to the vehicle, ensure it is pushed hard against the front wall with a good glue seal, and have the whole channel sitting as low as possible.



Step 8) Install two bolts through the drainage channel into the wellside threads, the thread in the front corner and the second thread from the rear. Use the original bolts which were taken from the sides in Step 2.



Step 9) Fill the gap between the drainage channel and the vehicle at the tailgate end of the channel.



Step 10) If the vehicle has a rubber grommet in the front corners beside the hooks, drill a 15mm hole in the rubber.



Step 11) Apply sealer to the front hook plate (PRT-004935), ensuring the hole is circled as shown, and extra sealer on the narrow end.



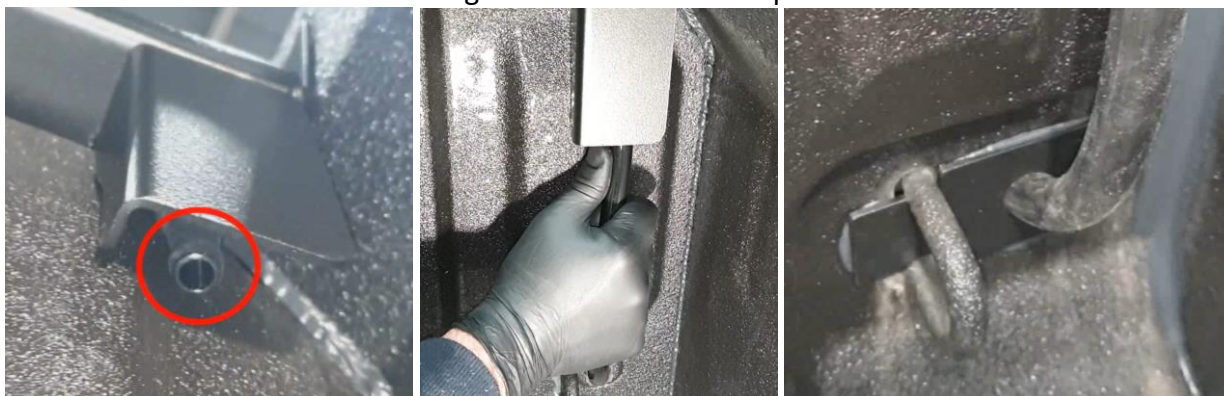
Step 12) Install the hook plate behind the front hook, with the hole above the hole in the tray.



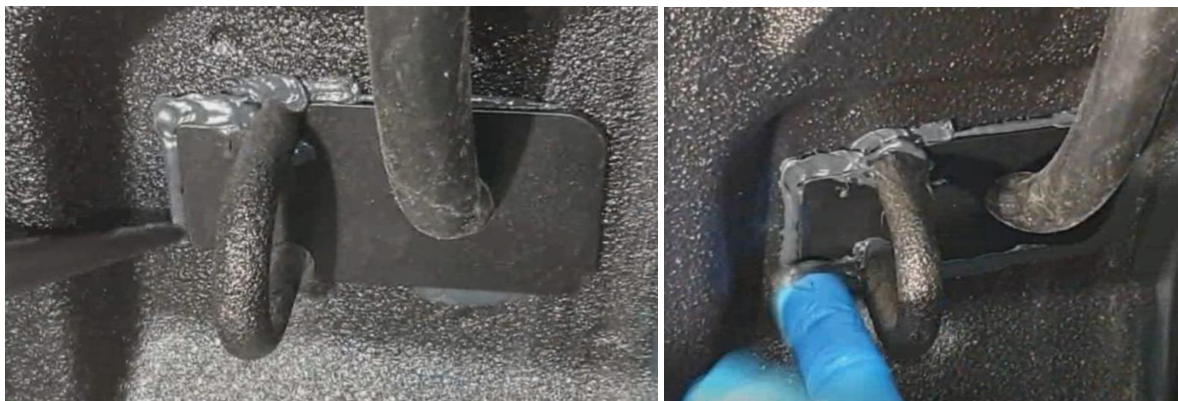
Step 13) Cut the provided length of hose in half.



Step 14) Attach the hose onto the drainage plug protruding from the bottom of the drainage channel. Insert the other end through the hole in the hook plate.



Step 15) Seal right around the hooks so there is no gaps for water to leak through, then seal around the edges of the plate. Wipe any excess sealer away so it looks tidy. *(Tip: use soapy water to smooth the sealer and give a nice finish).*



Step 16) Repeat the process around the hose.



Step 17) Drop the tailgate and remove the two bolts shown below.



Step 18) Seal the join shown, between the drainage channel and the vehicle.



Step 19) Seal right down the join indicated below.



Step 20) Seal the join shown below.



Step 21) Seal around the top along the join shown below.



Step 22) Run sealer along the base of the plastic as shown.



Step 23) Add a bead of sealer around the bulb on the tailgate brackets, only on the corner section as shown below.



Step 24) Install the tailgate brackets, loosely thread the bolts through the bracket back into the vehicle threads.



Step 25) Bolt the tailgate bracket to the drainage channel, then tighten the other two bolts.



Step 26) Seal down the inside of the bulb seal, between the tailgate bracket and the vehicle. Wipe smooth to fill any gaps, check again and fill any remaining gaps with sealer.
(Hint – use a torch on the inside to see if any light shines through)



Step 27) Apply sealer to the junction where the three components meet (drainage channel, tailgate bracket, and vehicle).



Step 28) Lift the lid onto the vehicle. Ensure the frame sits down inside the drainage channels.



Step 29) Push the Load-Lid as far forward as possible. **Test the tailgate to ensure it closes before proceeding to the next step.**

Step 30) Bolt through the Load-Lid into the remaining wellside threads (three per side).



Step 31) Install the provided bulb seal, starting on the Load-Lid and spanning across to the tailgate bracket. Align with the top edge and run right down to the bottom flange of the tailgate bracket.



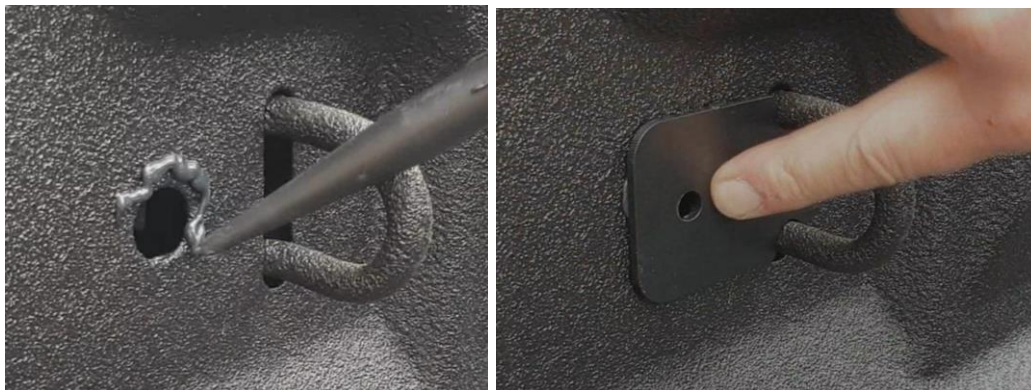
Step 32) Apply sealer to the top of the 'junction' (see Step 27).



Step 33) Fill the hole in the front corner with sealer, ensure the sealer is pushed inside (not just sitting on the outside).



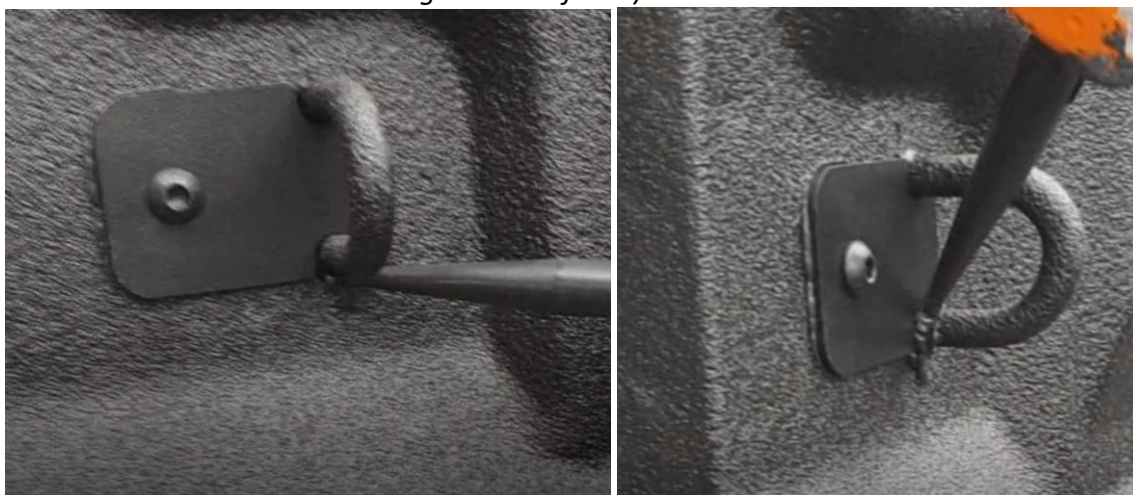
Step 34) Seal around the hole beside the rear hook, then place the hook sealer plate (PRT-003744) through the hook and against the glue. The hole in the plate should align with the hole in the wellside.



Step 35) Insert a black M8 bolt through the hole in the plate. Reach up underneath the vehicle and place an M8 fender washer and M8 nyloc nut on the bolt. Tighten up until it holds the plate firmly (two people required for this step).



Step 36) Seal right around the hooks so there is no gaps for water to leak through, then seal around the edges of the plate. Wipe any excess sealer away so it looks tidy. *(Tip: use soapy water to smooth the sealer and give a nice finish).*



Your Load-Lid is now fully fitted and ready to use.

Thank you again for using Utemaster™ and don't forget to keep checking our website for our latest innovations!